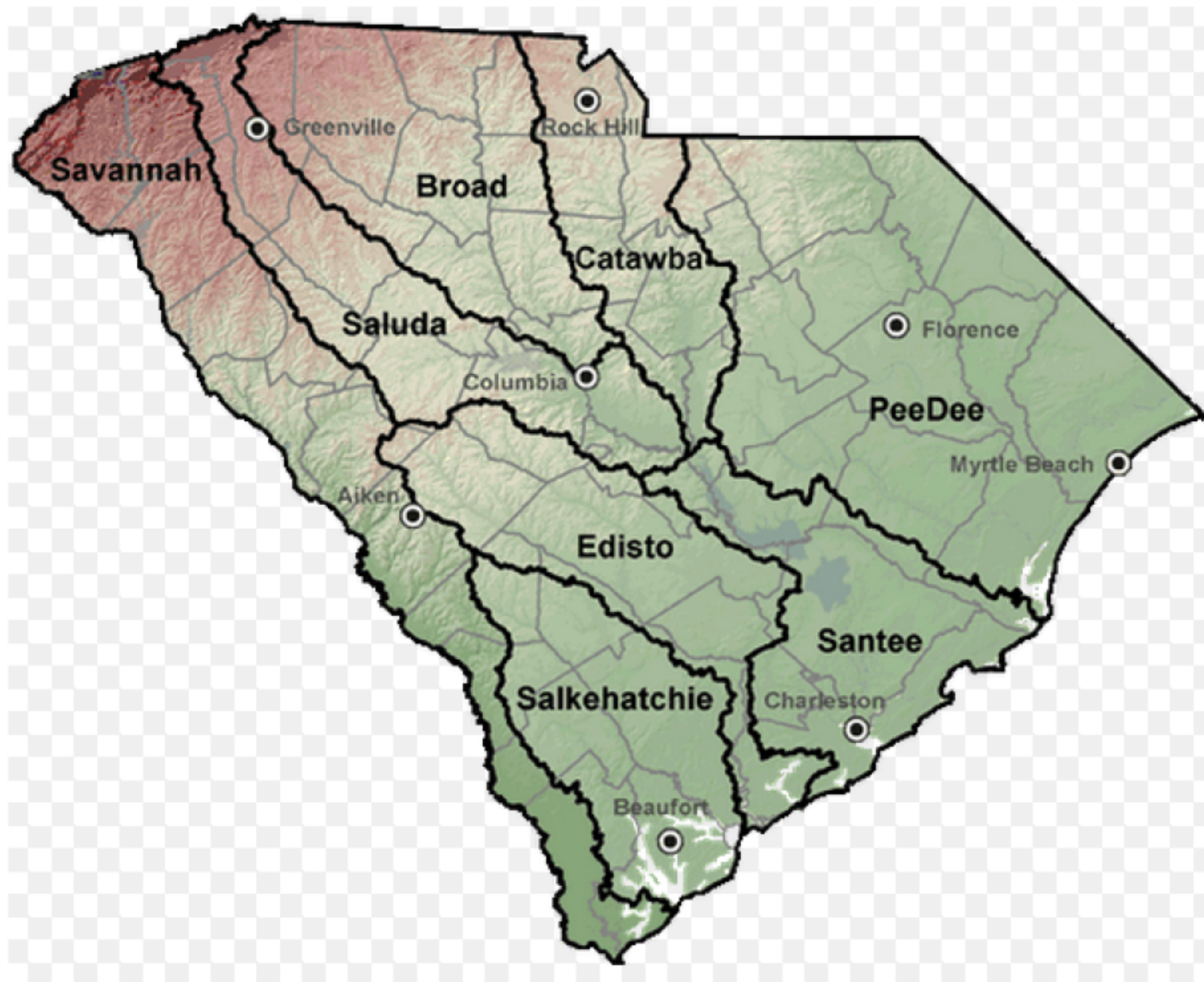


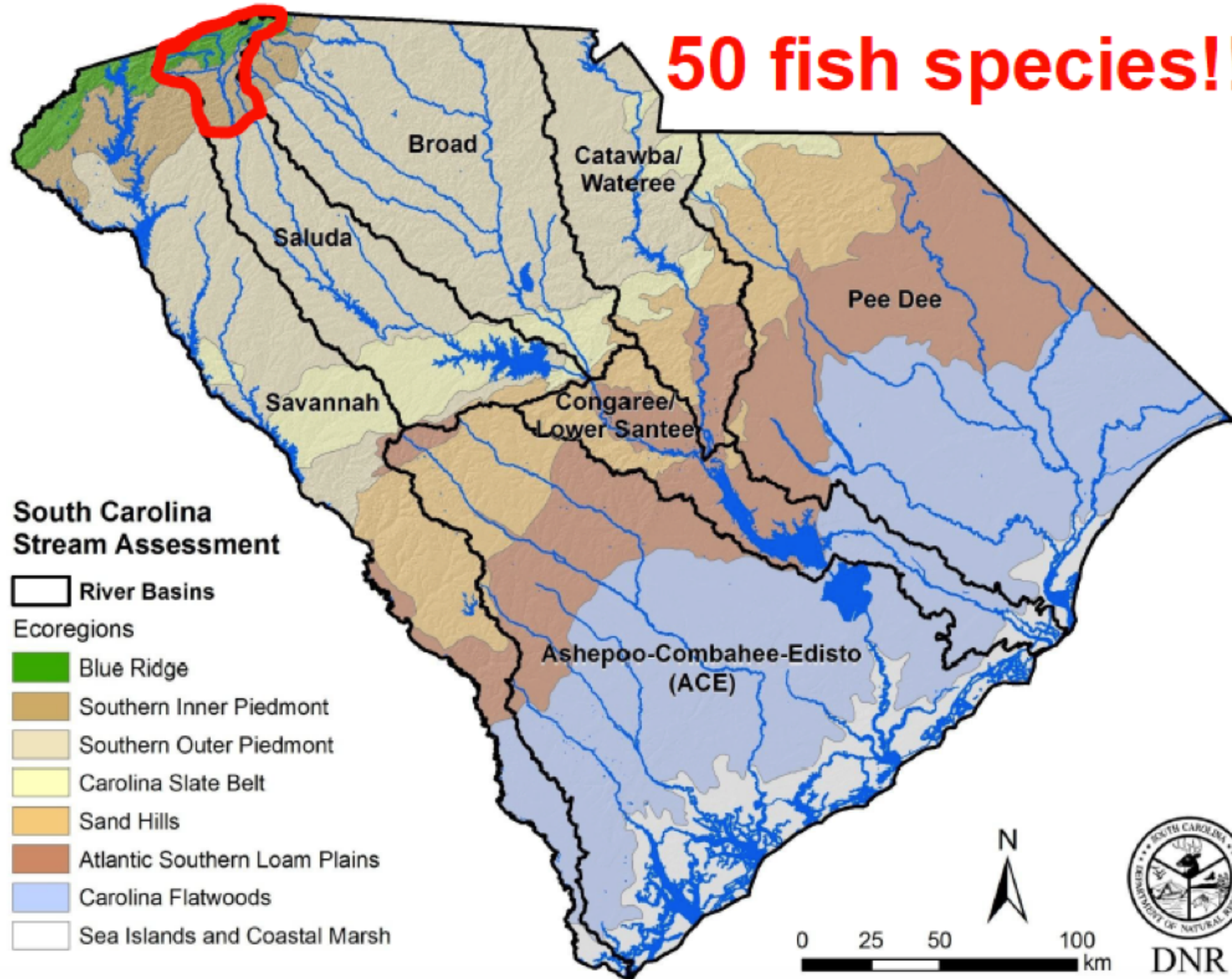
SAVE OUR SALUDA



saveoursaluda.org



50 fish species!!!!



Activities

- ✓ ***Advocacy***
- ✓ ***Monitoring***
- ✓ ***Education***
- ✓ ***River cleanups***
- ✓ ***Recreation***
- ✓ ***Projects***



Coal Ash Removal



Agreements with
Duke Energy for
safe removal and
storage of over 3
million tons toxic
coal ash from the
Saluda River

State and Regional

- South Carolina Rivers Forever
(CVSC & American Rivers)
- Southeast Flows Peer Learning Network
(River Network)

Hydrologic Alteration/Impairment

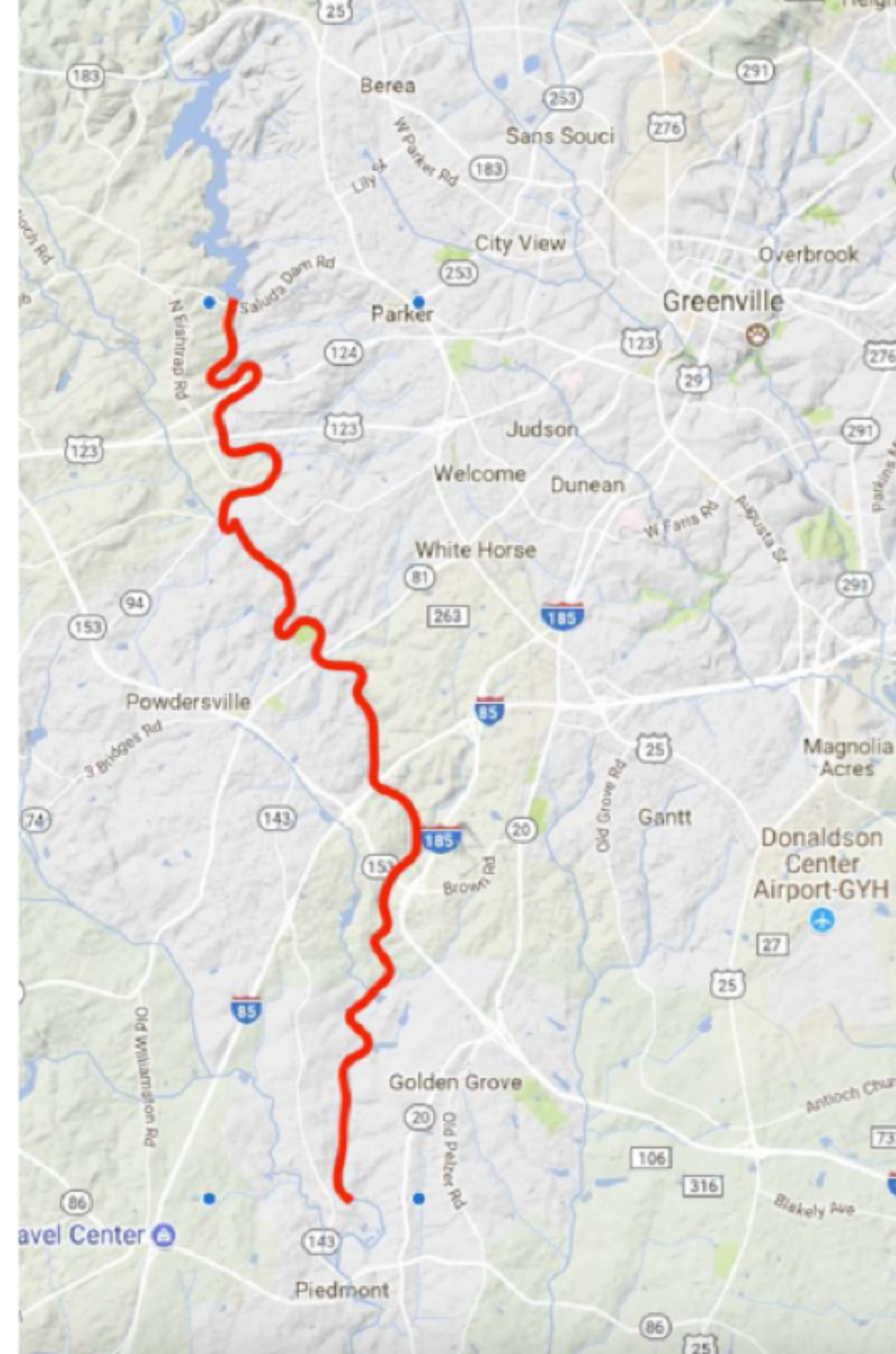
- In August 2015, EPA issues new guidance on “[waters impaired due to pollution not caused by a pollutant](#)” under Category 4C of their Integrated Reporting Guidance
- HA directly affects the physical quality of streams, wetlands and other waters, and can also affect their chemical and biological quality

Hydrologic Alteration/Impairment

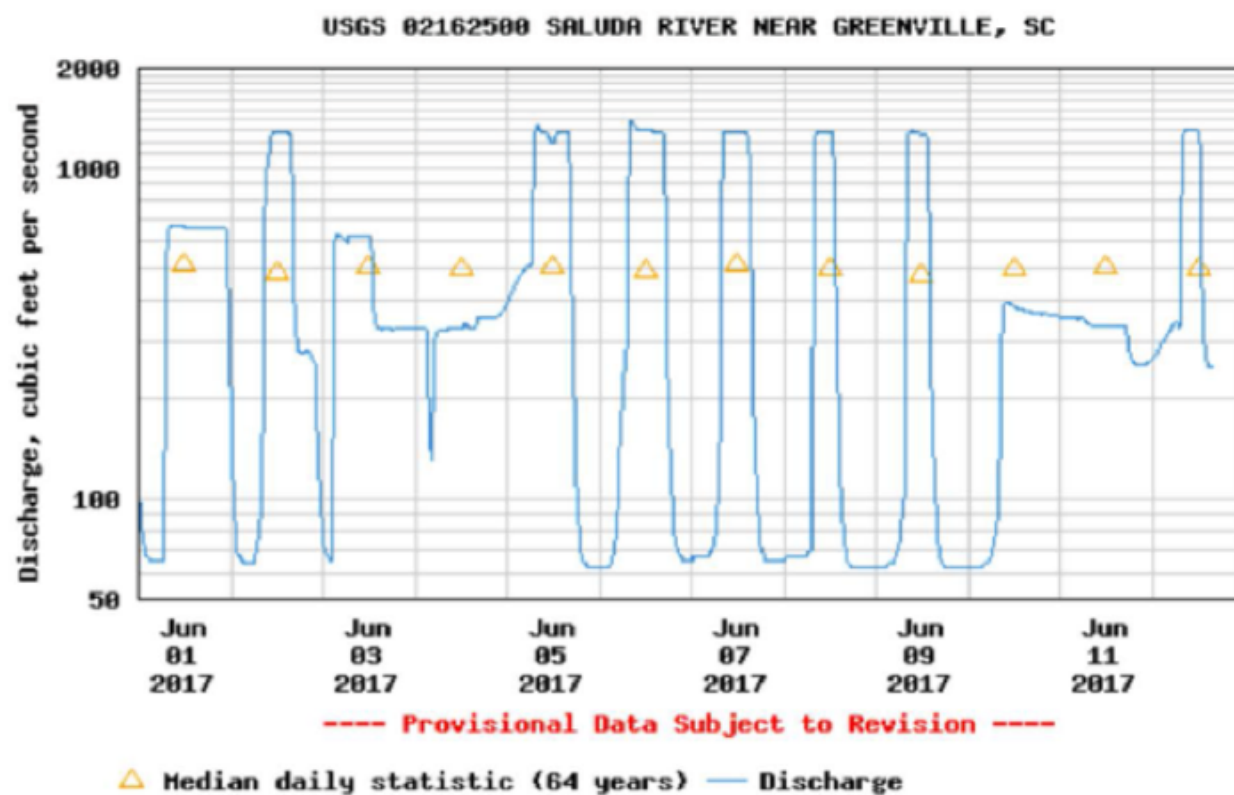
- a perennial water is dry, no longer has flow
- low flow
- stand-alone pools
- extreme high flows
- significant alteration of the frequency, magnitude, duration or rate-of-change of natural flow
- characterized by entrenchment, bank destabilization, or channelization

Proposed for listing as Hydrologically Impaired

- Saluda River – hydropower operations
- Reedy River – urbanization



Saluda Lake



Effects of Urbanization

Increase

- Runoff rate/velocity/volume
- Peak streamflow levels
- Flooding frequency

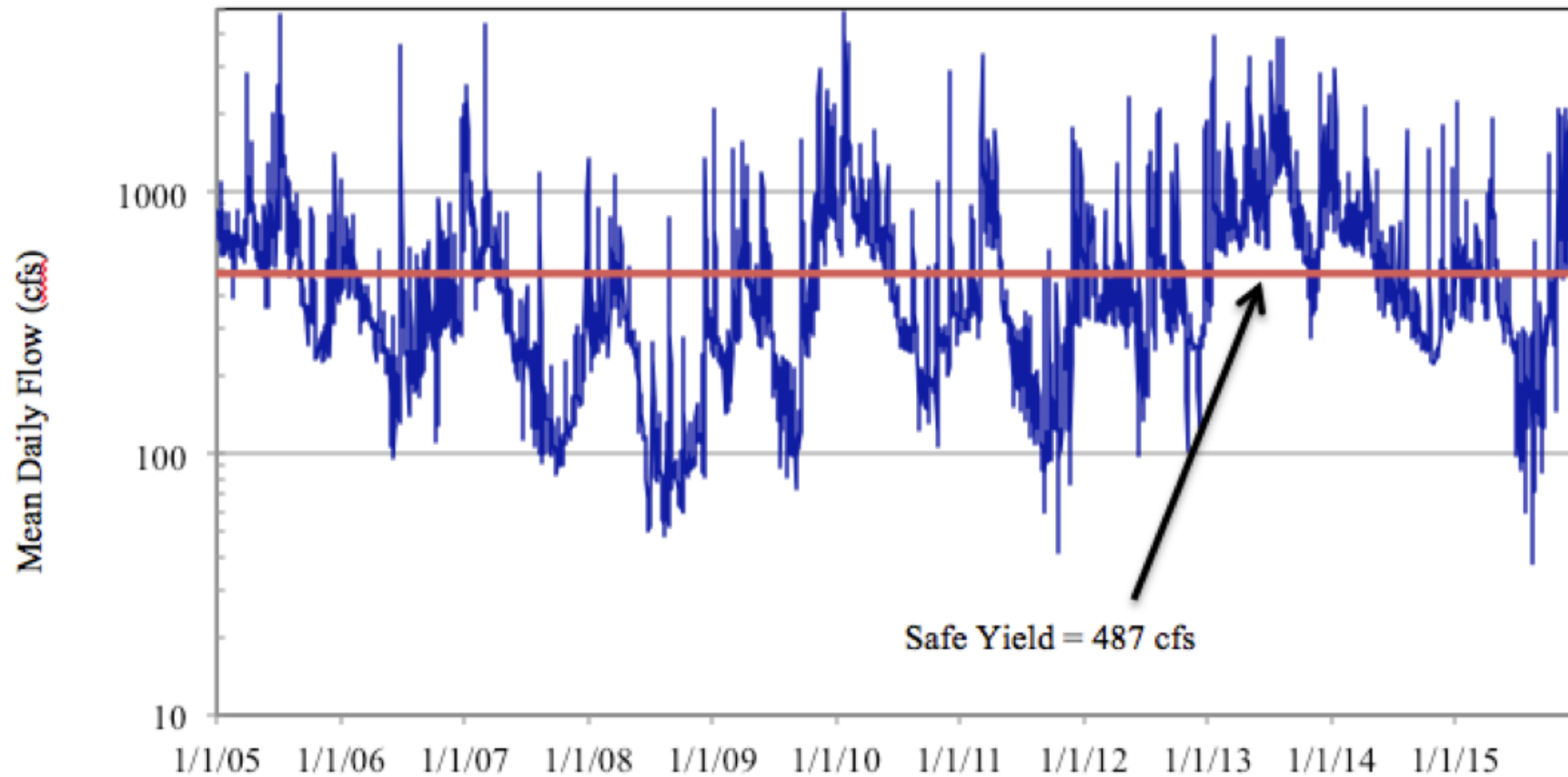
Decrease

- Lag time to peak flow
- Baseflow
- Subsurface storage



SC Water Withdrawal Law

Saluda River near Greenville

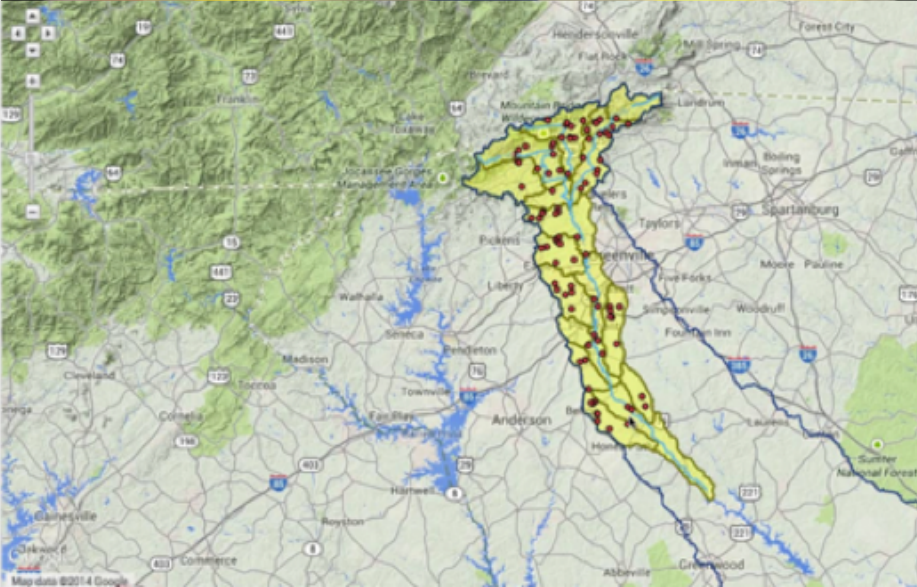


ADOPT a STREAM

South Carolina Adopt-a-Stream



Education



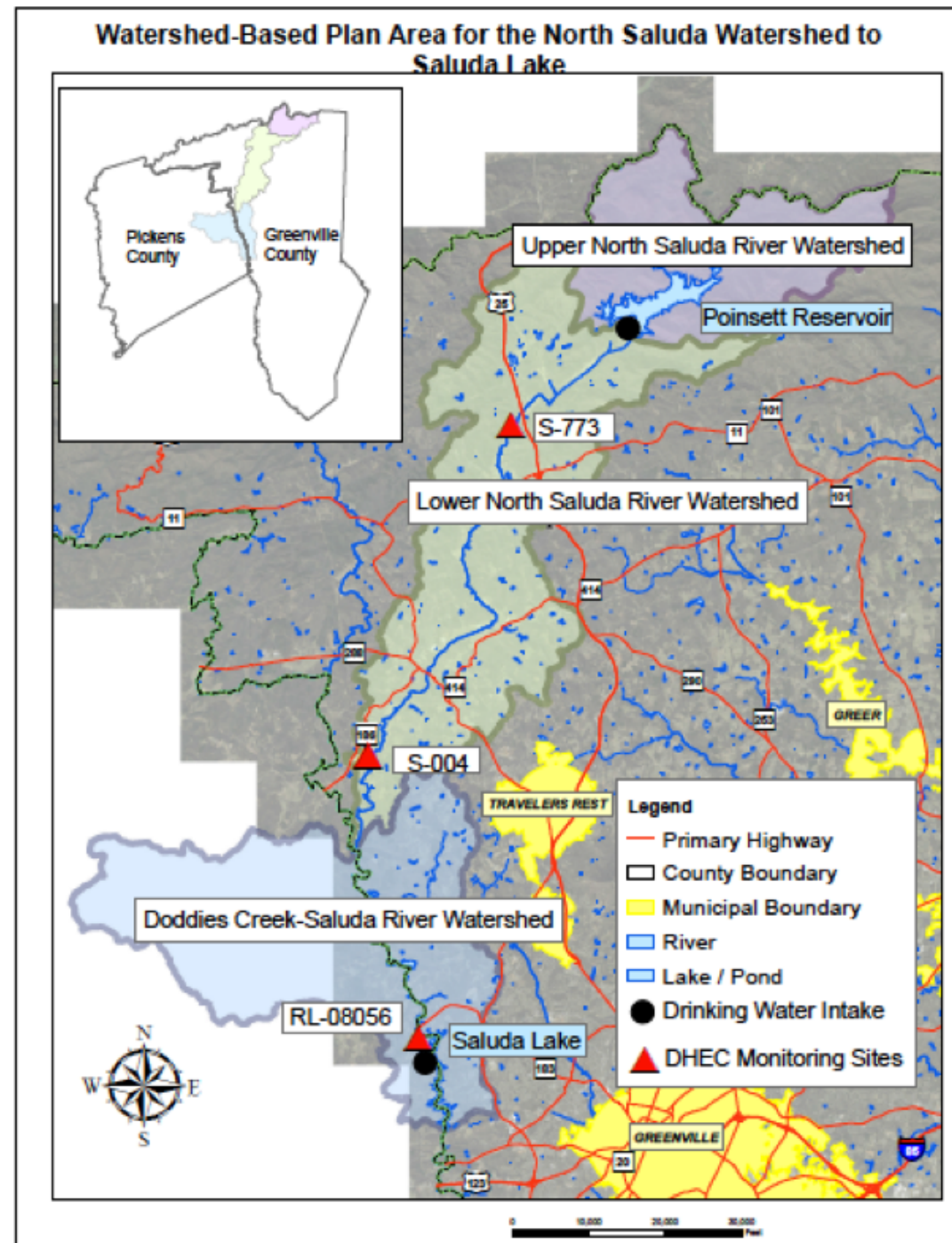
Riversweep Clean-up



Current Projects

- Watershed-Based Plan for Sediment in the North Saluda River and Saluda Lake (\$75.7K - partners)
- Agroecosystem Management Project on the North Saluda River (\$31K - partners)
- Interactive Watershed Map (\$5K – Bosch, Greenville Zoo)
- SCR4E + Hydrologic Impairment (\$10K - American Rivers)
- Website Development (\$4K - self-funded)

Watershed Based Plan to Address Sediment in the North Saluda River and Saluda Lake



Project Partners

- ✓ Easley Combined Utilities
- ✓ Clemson Cooperative Extension
- ✓ Furman University
- ✓ Greenville Co Soil & Water Conservation District
- ✓ Greenville County
- ✓ Naturaland Trust
- ✓ Greenville Water
- ✓ ReWa
- ✓ SCDNR
- ✓ SCDHEC
- ✓ SCRWA
- ✓ Trout Unlimited



© 2014 David Oppenheimer

SAVE OUR SALUDA



saveoursaluda.org